

archlit reserves the right to make changes without prior notice. (02.25.2022)

Wall and ceiling mounted Lighting Fixture for outdoors in an enclosure and end caps black in polycarbonate, and LED tray in aluminum, O ring at extremities seals the lighting components from water. A diffusing film is included for even illumination from the LED source. UV Stabilized Polycarbonate formulation. Dimmable 0- 10V. Individual mounting and runs can be achieved, sharing mounting canopies. Fixtures are individually adjustable. Symmetrical or asymmetrical distribution available. Remote drivers.

Design: Susana Babic + Gaspar Glusberg

IP66K rated

DaR

Da Round

**Lumen Output**

- 27 HO - 2700 K 12.5 w/f 910 Lumens/f
- 30HO - 3000 K 12.5 w/f 980 Lumens/f
- 35HO - 3500 K 12.5 w/f 1010 Lumens/f
- 40HO - 4000 K 12.5 w/f 1040 Lumens/f
- 27 - 2700 K 5.5 w/f 384 Lumens/f
- 30 - 3000 K 5.5 w/f 384 Lumens/f
- 40 - 4000 K 384 lumens /f 4.9 w/f

**Output direction**

- Up - Up
  - Dn - Down
  - Ds - Double sided
- Only for std output 5.5 w/f. Only std distribution. Assume 11 w/f with both sides  
Criteria from fixture installed on horizontal plane with canopies on top

**Finish**

- BK - Black
  - Cu - Custom Color
- Specify RAL color  
End caps, hardware, valves and liquid tight devices are black



**Dimming**

0 - Non Dimmable 120v

1 - Non Dimmable 277v

4 - Dimmable 0-10v (4wires, 120 or 277 v)

Enclosure for dimmers provided as they are remote. Suitable for damp location. In case of using special boxes for outdoor locations (by others) use archlit boxes in the boxes for splices

**Runs**

A - 1' nominal module

Dimension at center line of canopy (J Box)

B - 2' nominal module

Dimension at center line of canopy (J Box)

C - 3' nominal module

Dimension at center line of canopy (J Box)

D - 4' nominal module

Dimension at center line of canopy (J Box)

AE - Arm End

Add 6" to the complete run for clearance for canopy/ J Box

Ai - Arm intermediate

Total Run: (0 ft 0 in)

**Light Distribution**

St - Standard

Sd - Symmetrical 36 degrees

Ad - Asymmetrical

Using asymmetrical in runs, specify qty. of each in product code.

Good for estimates. Provide schemes /drawings to clarify asymmetrical side. archlit will generate submittals

Specify qty of each per run

**Arms Length**

A6 - Arm Standard 5 5/8"

A12 - 12"

A18 - 18"

Only for ceiling applications. Consult factory for wall installation

A24 - 24"

Only for ceiling applications. Consult factory for wall installation

A36 - 36"

Only for ceiling applications. Consult factory for wall installation

ACu - Custom Length

Specify ACu xx"

**Canopy / Spike**

Rd - Round

RdS - Round and Spike

Sp - Spike

Spikes only 5 3/4" for Std arms

Round for Std J box

**Emergency**

00 - No emergency

EM - Emergency

Max 4' nominal of emergency

Emergency in a run, specify qty of packs. Box for emergency outdoors installed (by others)

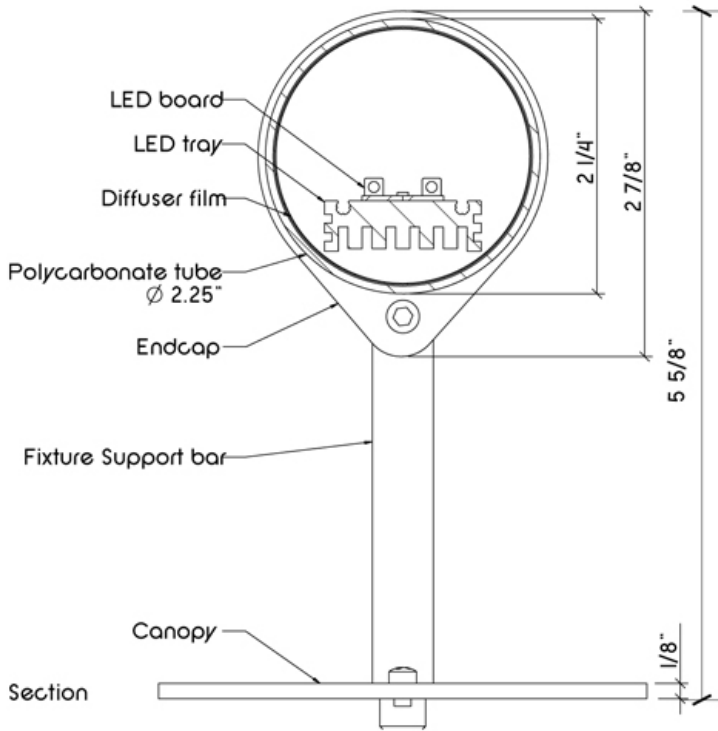
We suggest for one emergency pack and driver Polycase SB-46-02 (1 driver and 1 emergency pack) (by others)

**Notes:**

Drivers are remote at 80' max.

Location of drivers in a cluster with access recommended for easier dimmer and power connections.

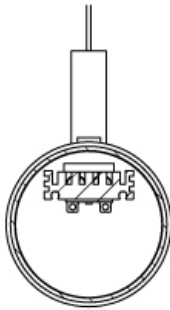
CRI more than 50, McAdam 3 bin



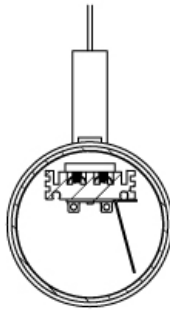


Light Distribution

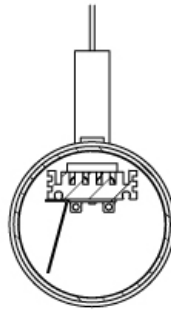
Downlight pendant



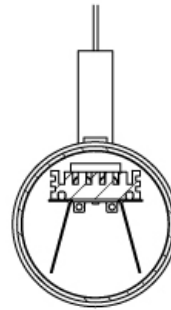
No reflector



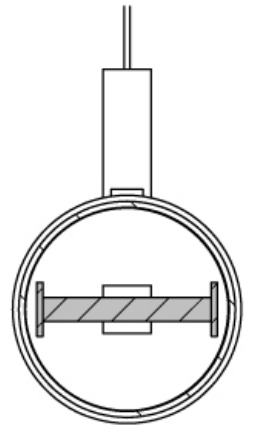
Asymmetrical reflector



-



Symmetrical reflector

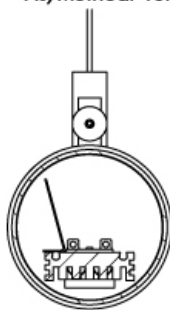


Down and Up light

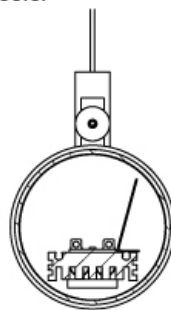
Uplight pendant



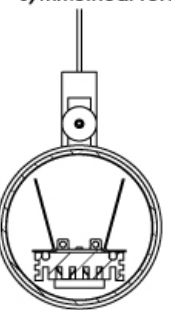
No reflector



Asymmetrical reflector

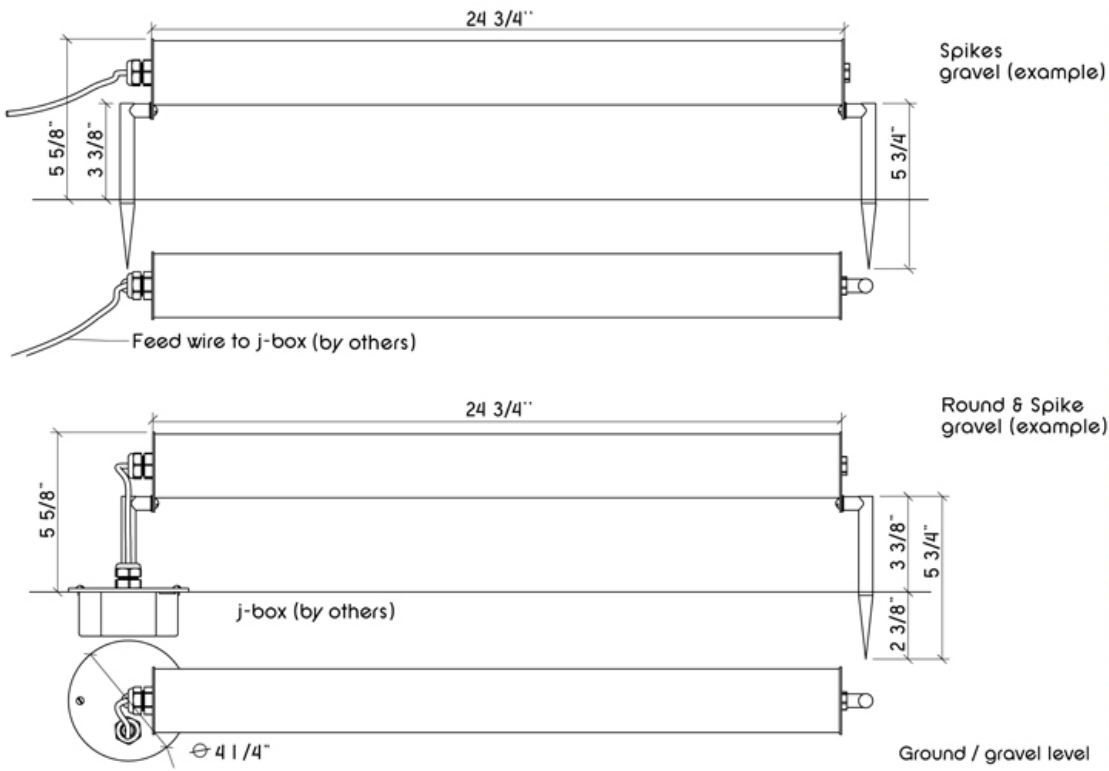


-



Symmetrical reflector







Driver Boxes

