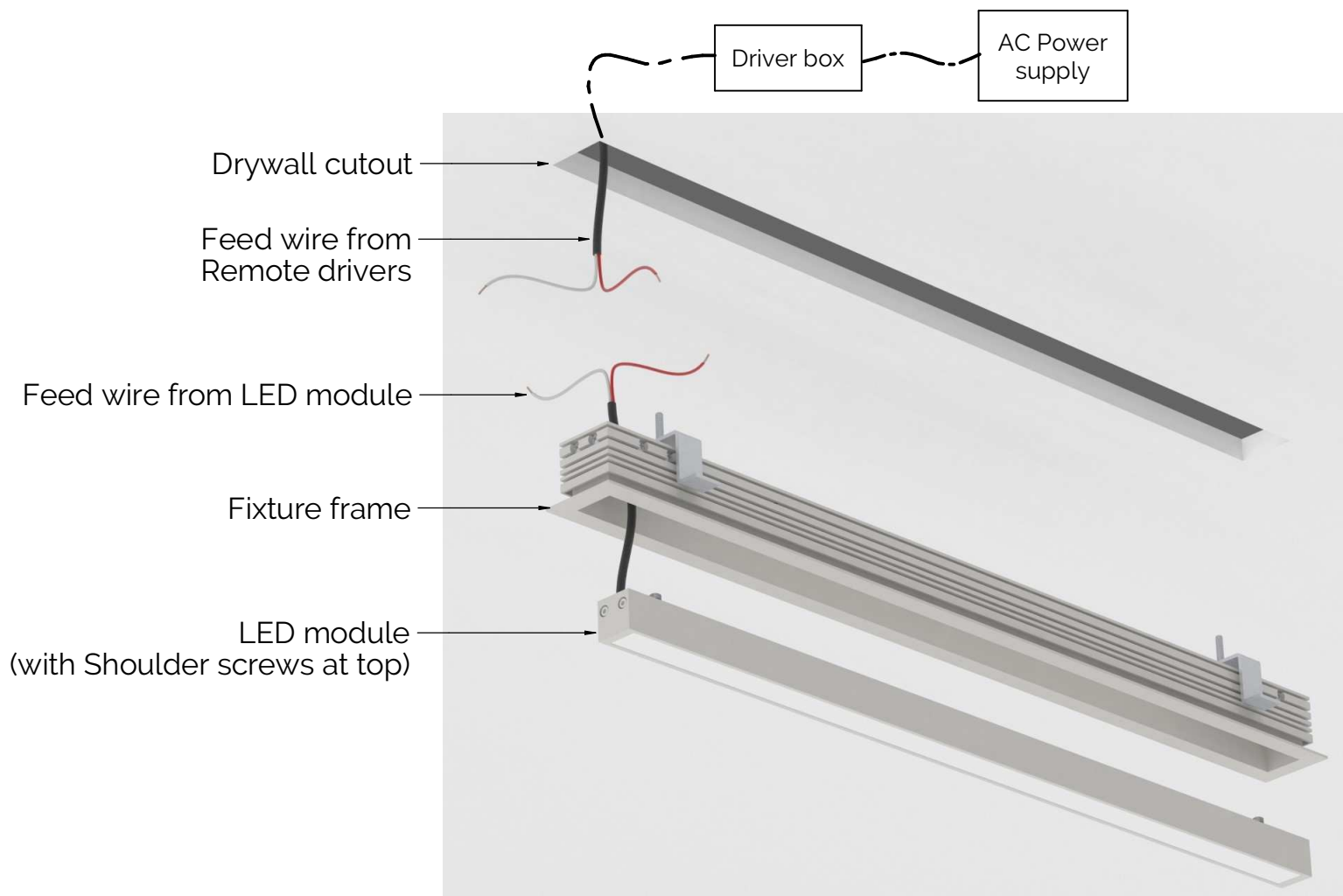


PLEASE READ THESE INSTRUCTIONS PRIOR TO INSTALLING THIS PRODUCT

CAUTION – RISK OF FIRE. THIS PRODUCT MUST BE INSTALLED IN ACCORDANCE WITH THE APPLICABLE INSTALLATION CODE (NEC 411) BY A PERSON FAMILIAR WITH THE CONSTRUCTION AND OPERATION OF THE PRODUCT AND HAZARDS INVOLVED.

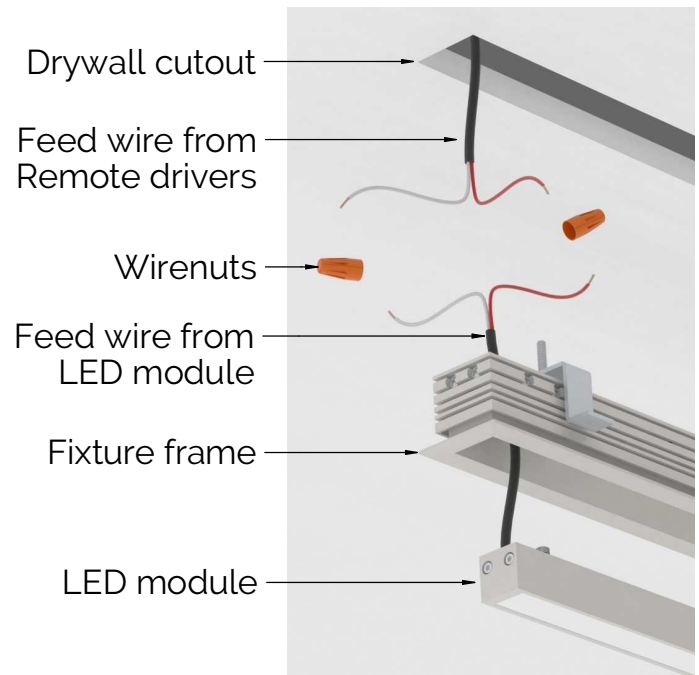
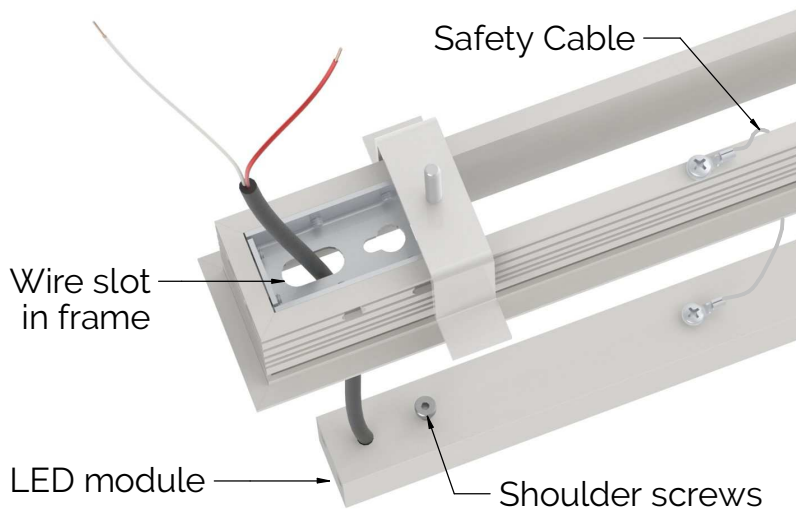
1. Disconnect electrical power from lighting circuit before installation.
2. Make sure LED drivers, Linear LED Modules and all other fixture components are present.
3. This installation assumes Class 2 two conductor wires have been run from fixture mount location to LED driver enclosure location.
4. LED driver enclosure must be installed in an accessible, dry and well ventilated location using the screw holes provided in enclosure.
5. Make wire connection from LED driver to two conductor Class 2 wire, running in ceiling with wire nuts (not included).
6. Blocking in wall behind mounting surface is required in advance to support fixture.
7. Cutout the opening in drywall / wall for inserting frame as per Submittal drawings.



LeeSti AbbyOw Recessed

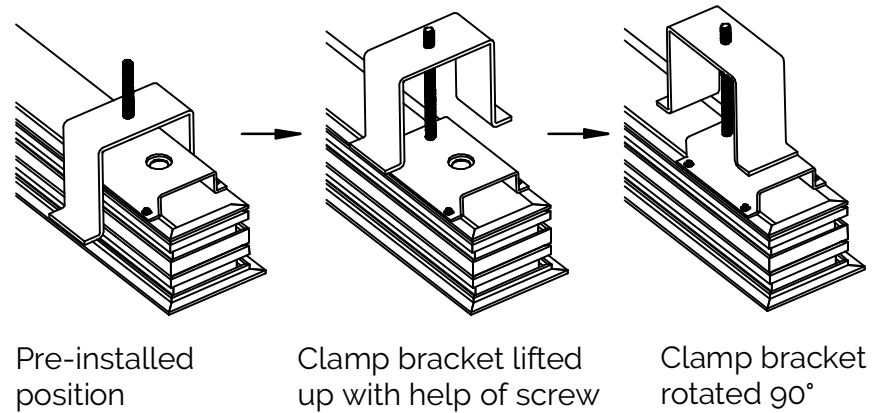
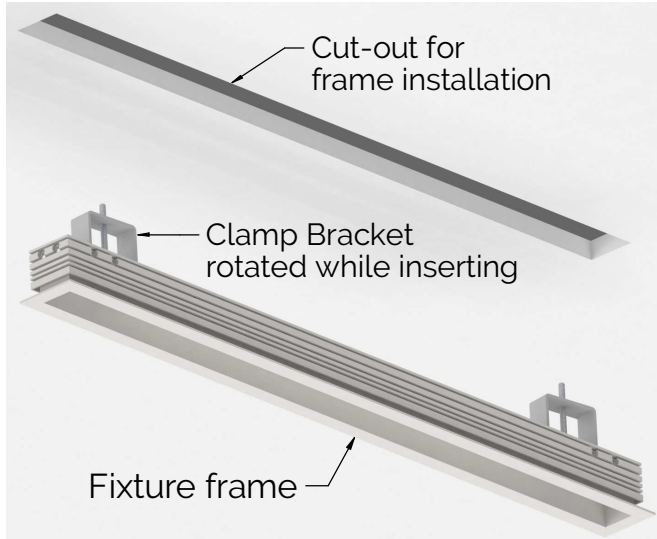
Installation Instructions

8. Connect feed wire from LED module to wires from Remote driver (whip) above fixture frame. Make sure to pass feed wire from LED module through wire slot in frame.



Step 8: Wiring connection

9. Initially the Clamp bracket is parallel to frame. To insert frame into Cut-out, make the clamp bracket to lift up and rotate it 90° using a screw driver, so that it causes no hinderance while inserting frame.

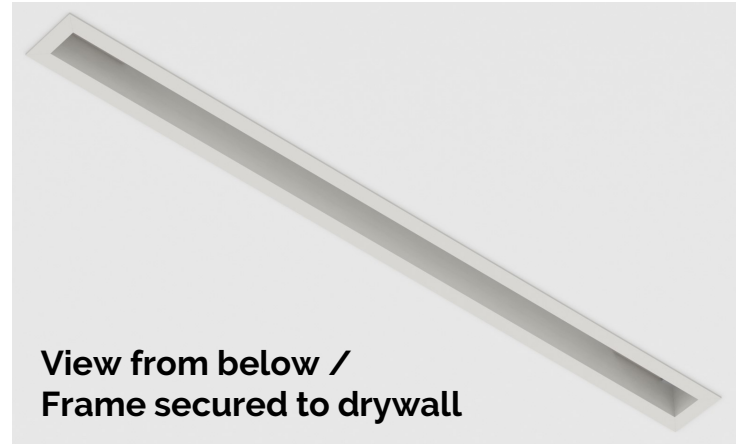
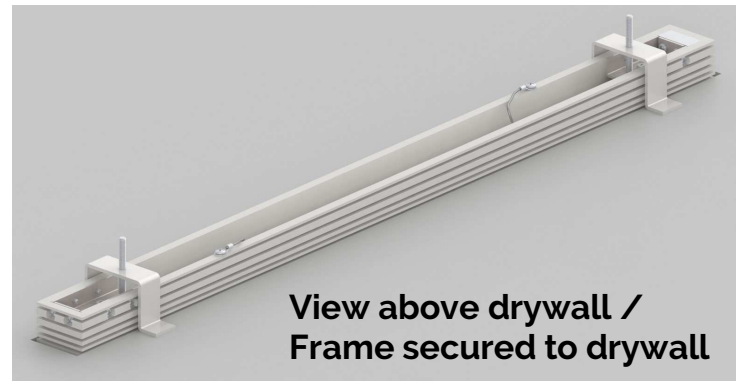
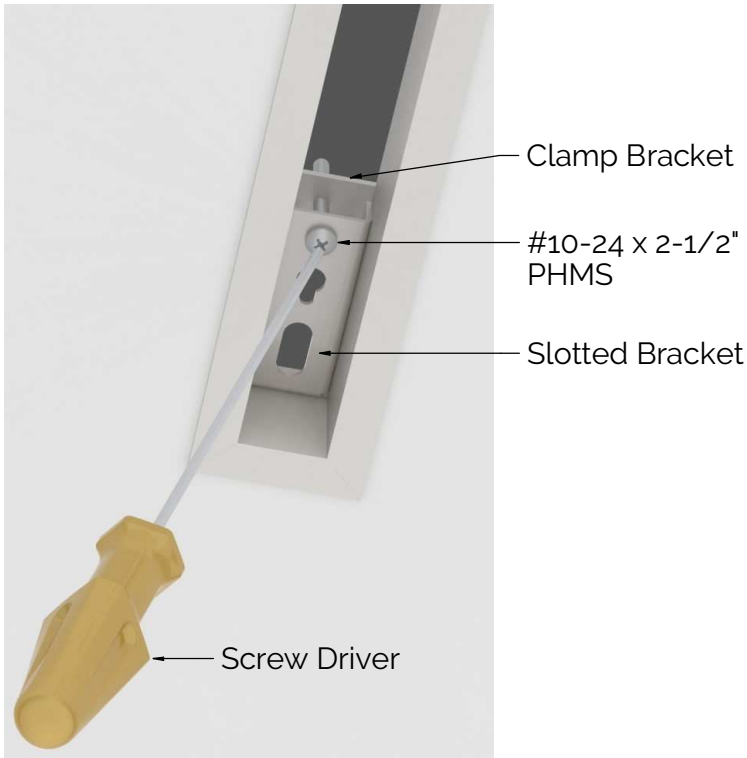


Step 9-10: Inserting fixture frame to drywall

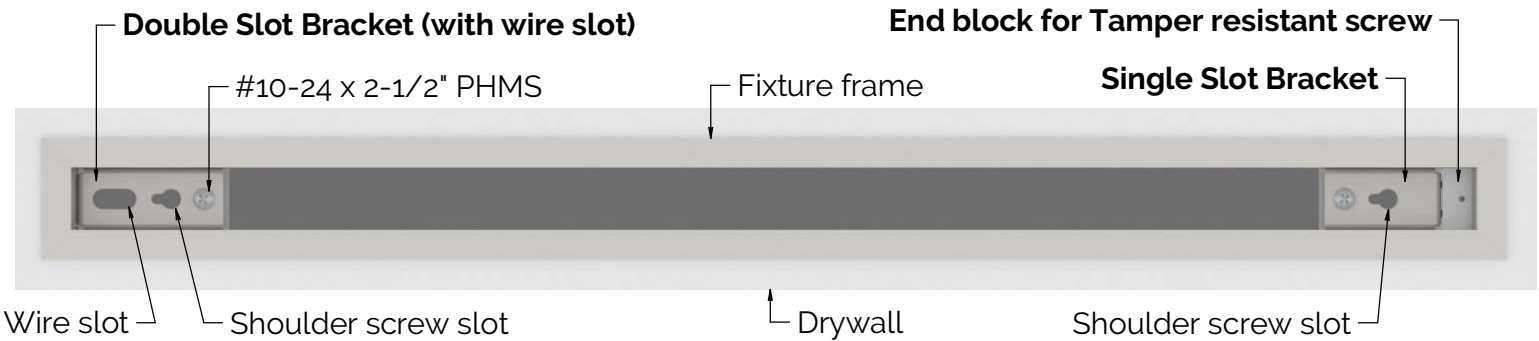
10. Insert fixture frame into ceiling opening so that only flange is seen at surface.
11. Rotate clamp bracket 90° again, so it slides down over frame. Tighten clamp bracket screw until Clamp bracket has secured frame in ceiling opening. Do not over-tighten clamp bracket as it may damage the fixture.
12. If installing Trimless frame secure it to blocking using wood screws. Apply mud to finish wall and cover trimless frame.

LeeSti AbbyOw Recessed

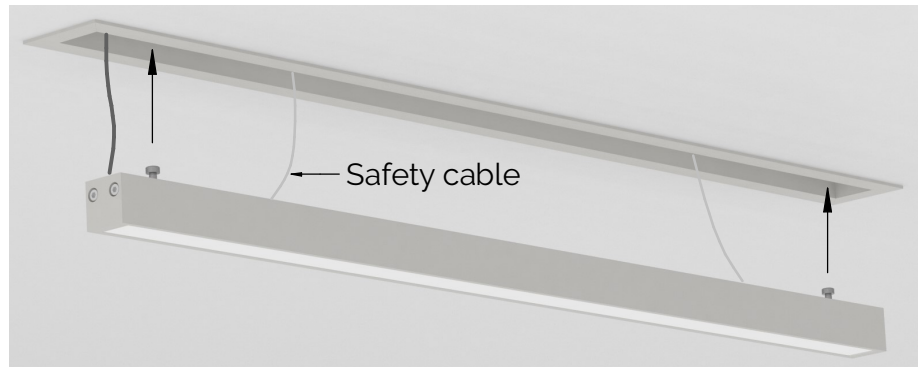
Installation Instructions



Step 11: Securing frame to drywall



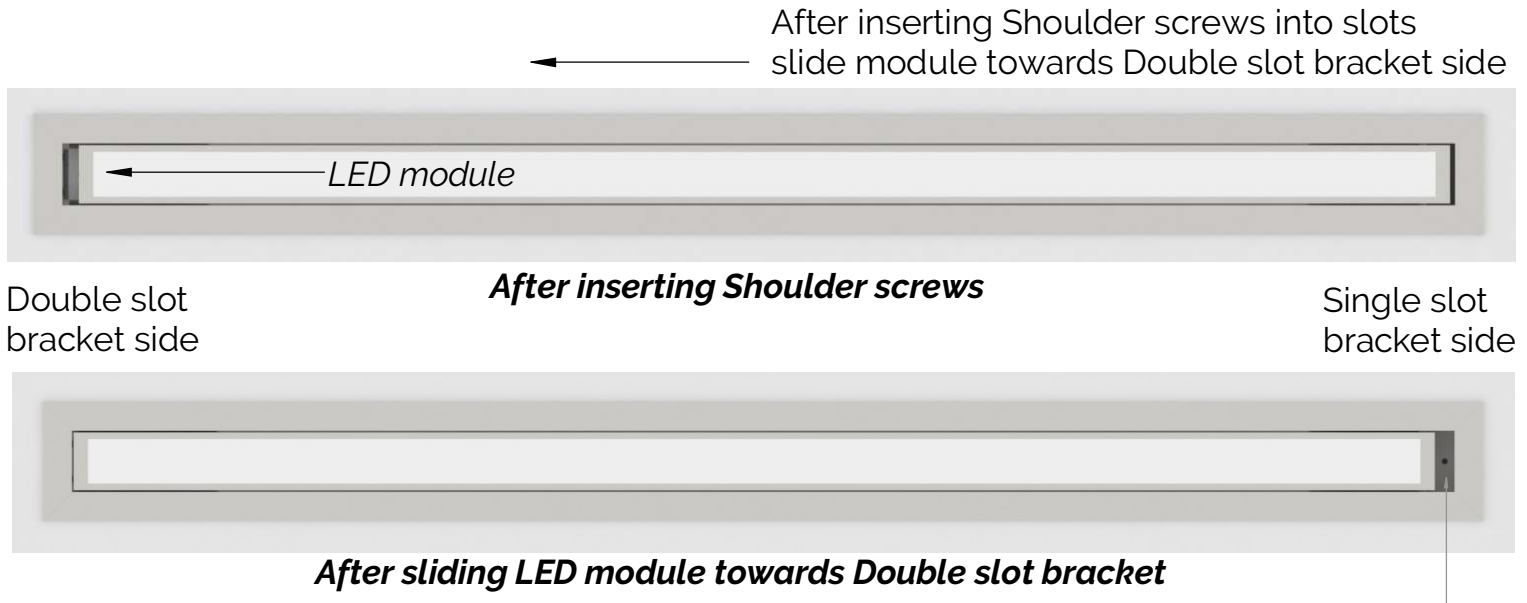
13. Insert LED module into frame completely by aligning shoulder screw head at top of module into bigger slotted hole of Slotted bracket each side. Make sure LED module is attached to Fixture frame by a safety cable (aircraft cable) to avoid damage or injury.



Step 13: Inserting LED module to fixture frame



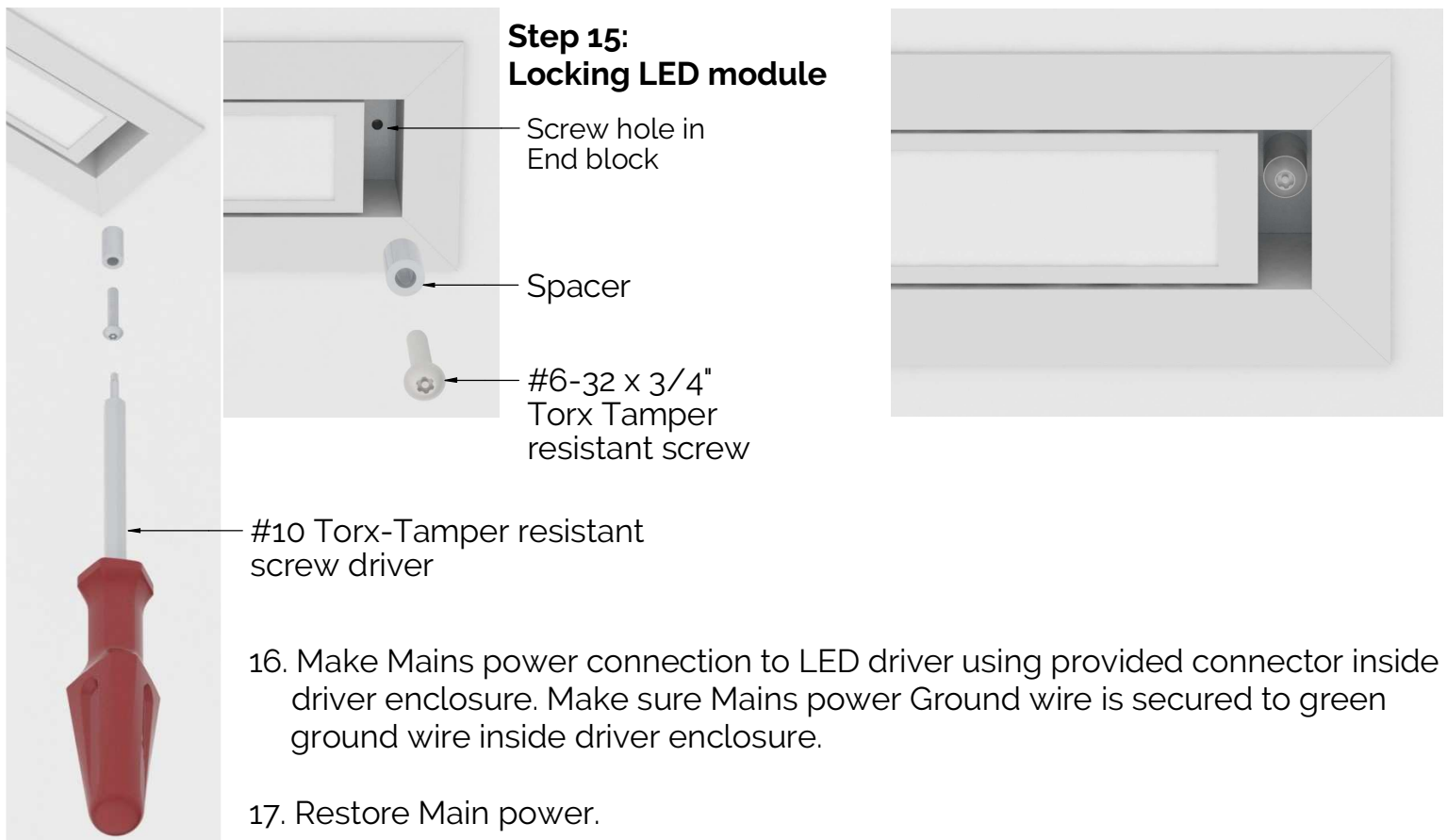
14. Slide LED module towards Double slot Bracket to lock both Shoulder screws into smaller slot. Keep module in this position until Tamper resistant screw is secured to frame. Make sure module is well secured to frame and there are no pinched or exposed wires.



Step 14: Locking Shoulder screws

End block for Tamper resistant screw

15. Insert #6-32 x 3/4" Torx-Tamper resistant screw with spacer over it and screw it to End block for Tamper resistant screw to lock LED module movement. Use Tamper resistant Torx #10 screw driver. This should finally secure LED module to frame.

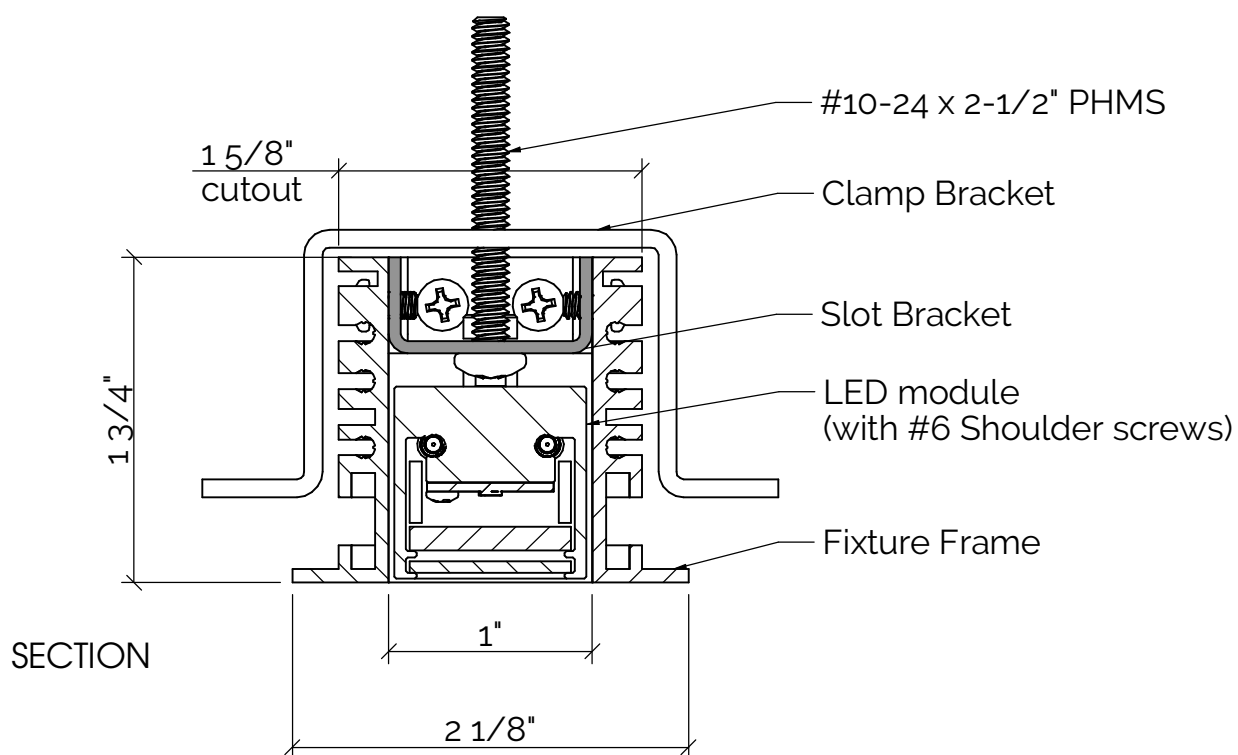


LeeSti AbbyOw Recessed

Installation Instructions



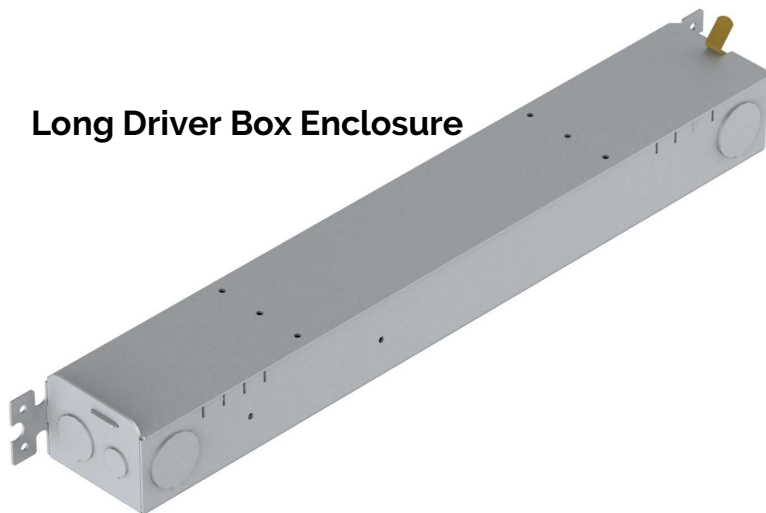
FINISHED FIXTURE



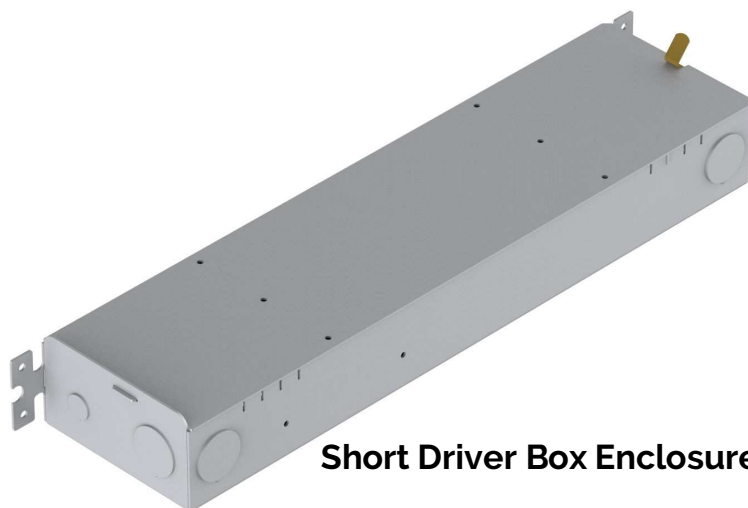
LeeSti AbbyOw Recessed

Installation Instructions

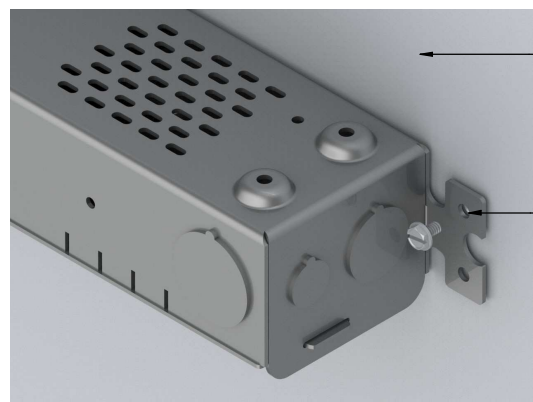
Long Driver Box Enclosure



Short Driver Box Enclosure



Installing Driver enclosure



Driver enclosure mounting surface

Driver enclosure, should be installed with flanges secured to mounting surface as shown

Secure Driver box enclosure flange to remote mounting surface by a screw at each end of enclosure



Horizontal mounting

Vertical mounting

