

archlit reserves the right to make changes without prior notice. (09.02.2021)

LeeSti Cove LED, in 1"x 1" section in extruded aluminum. Adjustable with film protection so source is not perceived. This solution brings a line of light that also diffuses itself, only seen when high glossy surfaces are used.

Drivers are remote and can be dimmable (0-10v -4 wires- for central dimmer systems or Triac -2 wires- for standard dimmers). 12.5 w per foot in 2700K or 3000K. Remote drivers at 100' max from the fixture. Max length of 4' for non dimmable or 0-10v dimmer. 4' for Triac version requires 2 drivers

LCOV

LeeSti Cove

**Lumen Output**

- 3017 - 3000 K 1200 lumens / ft 12 w /ft WH - White O - Non dimmable 120v
  - 3014 - 3000 K 1000 lumens / ft 10 w /ft BK - Black 1 - Non dimmable 277v
  - 3011 - 3000 K 780 lumens / ft 7.5 w /ft CU - Custom Color 4 - Dimmable 0-10v (4wires, 120 or 277 v)
  - 3008 - 3000 K 560 lumens / ft 5.5w /ft Specify RAL color
  - 3005 - 3000 K 350 lumens / ft 3.1 w /ft
  - 3517 - 3500 K 1200 lumens / ft 12 w /ft
  - 3514 - 3500 K 1000 lumens / ft 10 w /ft
  - 3511 - 3500 K 780 lumens / ft 7.5 w /ft
  - 3508 - 3500 K 560 lumens / ft 5.5w /ft
  - 3505 - 3500 K 350 lumens / ft 3.1 w /ft
  - WhTu - White tuning 2700K @ 1050 lumens/foot and 6500k @1200 lumens/foot 12.5 watt/foot
- All Uplight versions with light will have a transparent diffuser  
Use of programmable drivers allow different outputs (lumen output and load) to fix color temperature versions

**Finish**

- WH - White
  - BK - Black
  - CU - Custom Color
- Specify RAL Color

**Dimming**

- O - Non Dimmable 120v
- 1 - Non Dimmable 277v
- 4 - Dimmable 0-10v (4wires, 120/277 v)



**Runs**

A - 1' module 12.5w 12 5/8"

B - 2' module 25w 23 3/8"

C - 3' module 37.5 w 34 5/8"

D - 4' module 50w 45 5/8"

Total Run: (0 ft 0 in)

Distance suggested between modules one eighth of an inch

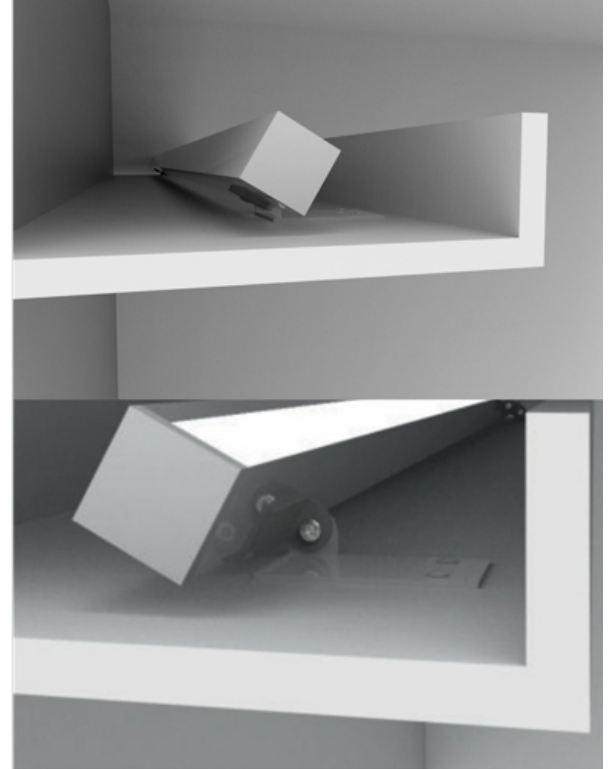
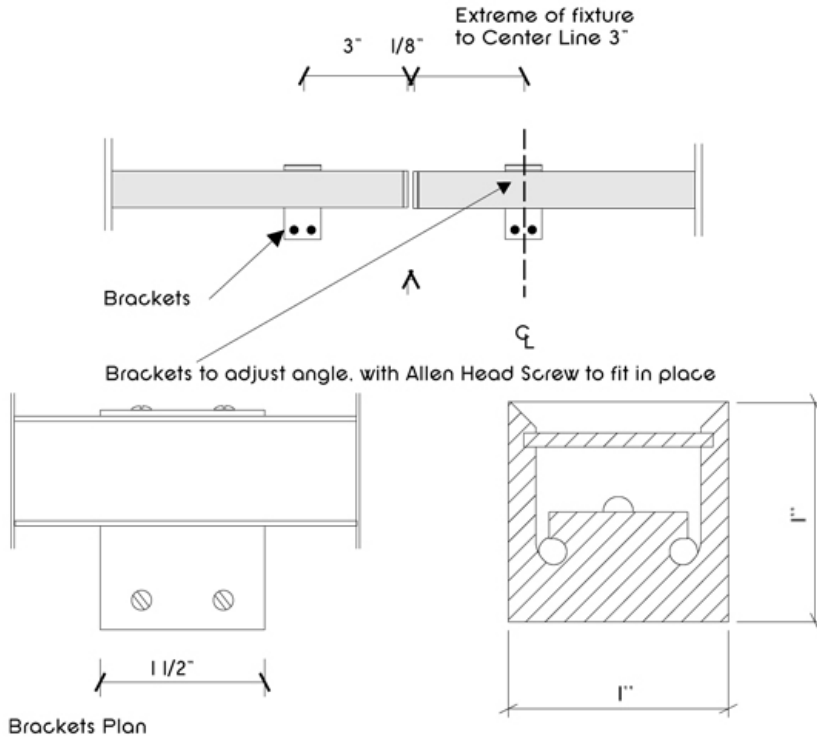
**Emergency**

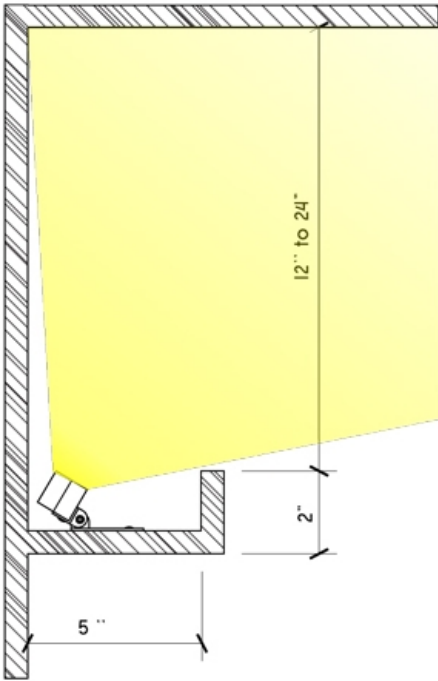
0 - No Emergency

EM - Emergency module max. 24"

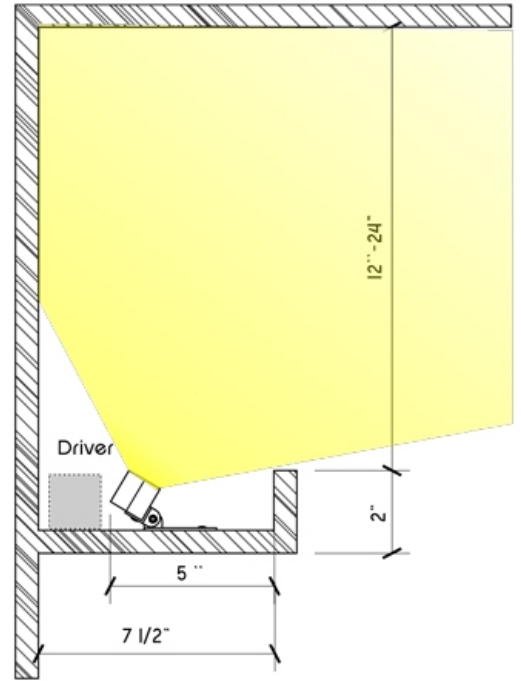
**Notes:**

Remote drivers max 100'





Cove with remote drivers not in Cove NTS



Cove with drivers in Cove NTS

12" to 24" for cove is for general illumination in the space; if effects are needed, this height can be lower, with a minimum of 6" to be possible to aim and service the LeeSti Cove



Driver Boxes

