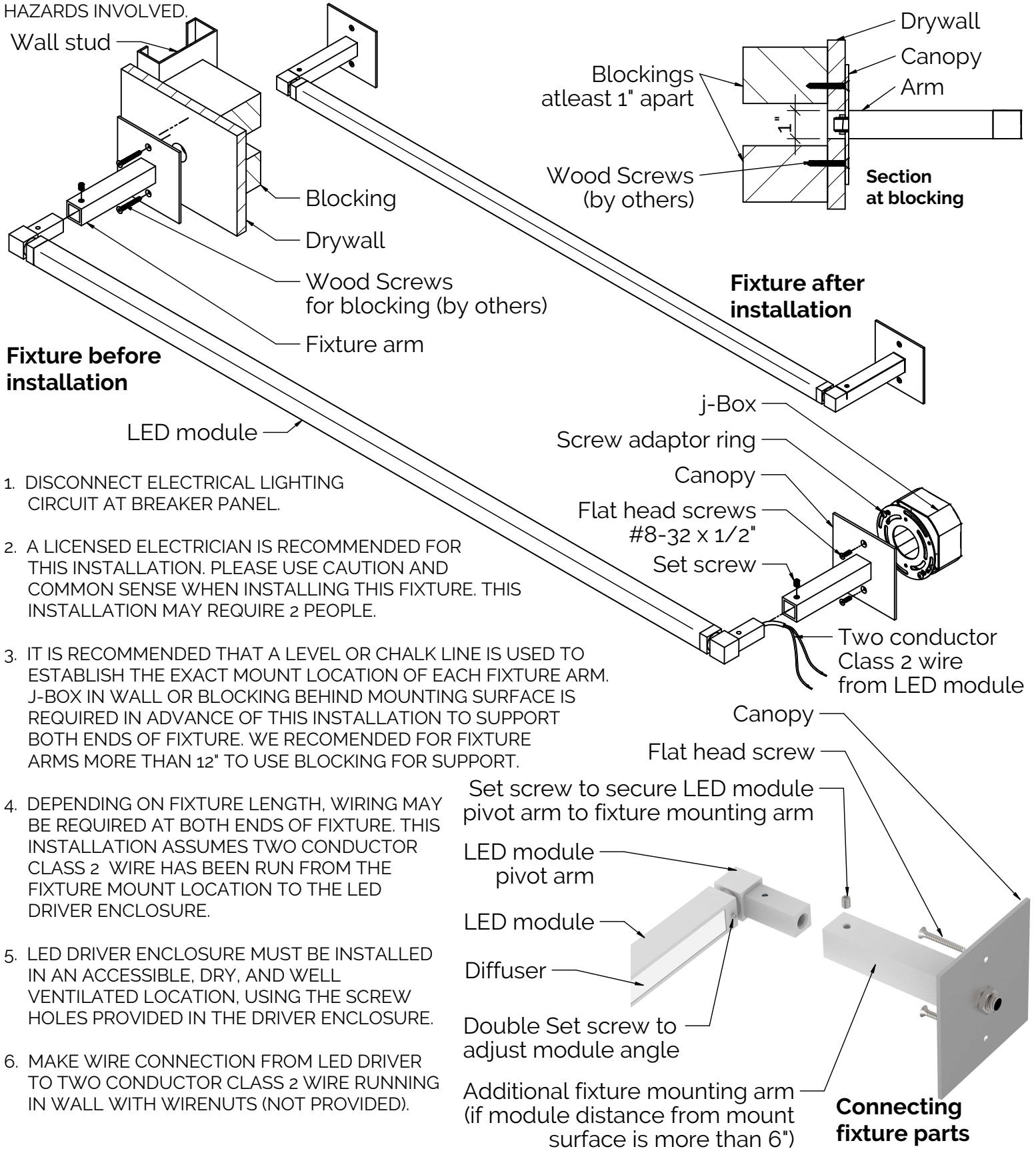


PLEASE READ THESE INSTRUCTIONS PRIOR TO INSTALLING THIS PRODUCT

CAUTION – RISK OF FIRE. THIS PRODUCT MUST BE INSTALLED IN ACCORDANCE WITH THE APPLICABLE NEC/LOCAL INSTALLATION CODE BY A PERSON FAMILIAR WITH THE CONSTRUCTION AND OPERATION OF THE PRODUCT AND HAZARDS INVOLVED.



Fixture before installation

Fixture after installation

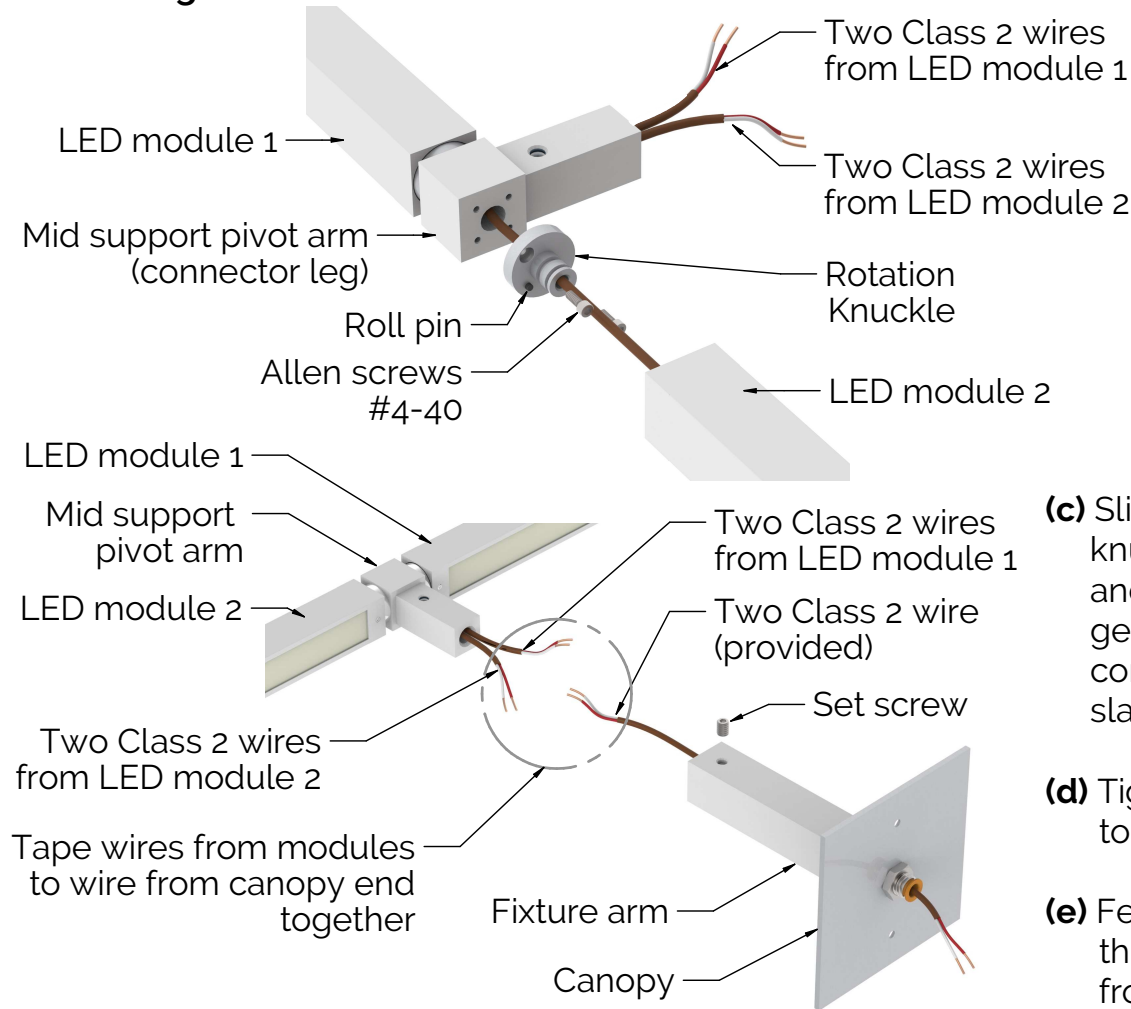
1. DISCONNECT ELECTRICAL LIGHTING CIRCUIT AT BREAKER PANEL.
2. A LICENSED ELECTRICIAN IS RECOMMENDED FOR THIS INSTALLATION. PLEASE USE CAUTION AND COMMON SENSE WHEN INSTALLING THIS FIXTURE. THIS INSTALLATION MAY REQUIRE 2 PEOPLE.
3. IT IS RECOMMENDED THAT A LEVEL OR CHALK LINE IS USED TO ESTABLISH THE EXACT MOUNT LOCATION OF EACH FIXTURE ARM. J-BOX IN WALL OR BLOCKING BEHIND MOUNTING SURFACE IS REQUIRED IN ADVANCE OF THIS INSTALLATION TO SUPPORT BOTH ENDS OF FIXTURE. WE RECOMMENDED FOR FIXTURE ARMS MORE THAN 12" TO USE BLOCKING FOR SUPPORT.
4. DEPENDING ON FIXTURE LENGTH, WIRING MAY BE REQUIRED AT BOTH ENDS OF FIXTURE. THIS INSTALLATION ASSUMES TWO CONDUCTOR CLASS 2 WIRE HAS BEEN RUN FROM THE FIXTURE MOUNT LOCATION TO THE LED DRIVER ENCLOSURE.
5. LED DRIVER ENCLOSURE MUST BE INSTALLED IN AN ACCESSIBLE, DRY, AND WELL VENTILATED LOCATION, USING THE SCREW HOLES PROVIDED IN THE DRIVER ENCLOSURE.
6. MAKE WIRE CONNECTION FROM LED DRIVER TO TWO CONDUCTOR CLASS 2 WIRE RUNNING IN WALL WITH WIRENUTS (NOT PROVIDED).

Connecting fixture parts

7. IF FIXTURE ARM IS OVER 6" THEN FEED WIRE FROM LED MODULE THRU FIXTURE ARMS. USE ORANGE WIRE PROTECTOR PROVIDED AT WALL MOUNT END OF FIXTURE ARM AND MAKE SURE WIRE IS RUNNING THROUGH IT. SECURE FIXTURE ARMS TO LED MODULE USING PROVIDED SET SCREW. DO NOT OVERTIGHTEN. IF ARM IS 6" OR UNDER THEN PIVOT ARM AND FIXTURE ARM WILL BE IN ONE PIECE ALREADY ASSEMBLED.

8. IF FIXTURE REQUIRES CONNECTION OF TWO OR MORE CONTINUOUS MODULES THEN FOLLOW STEPS (a) TO (f) GIVEN BELOW, OTHERWISE MOVE TO STEP 9.

Connecting continuous fixtures and their feed wires



(a) Lay fixture out in a flat area where they will be installed. Feed wire through fixture connector leg.

(b) Assemble rotation knuckle with (2) 4-40 allen head screws provided. Note stop roll pin location to LED module.

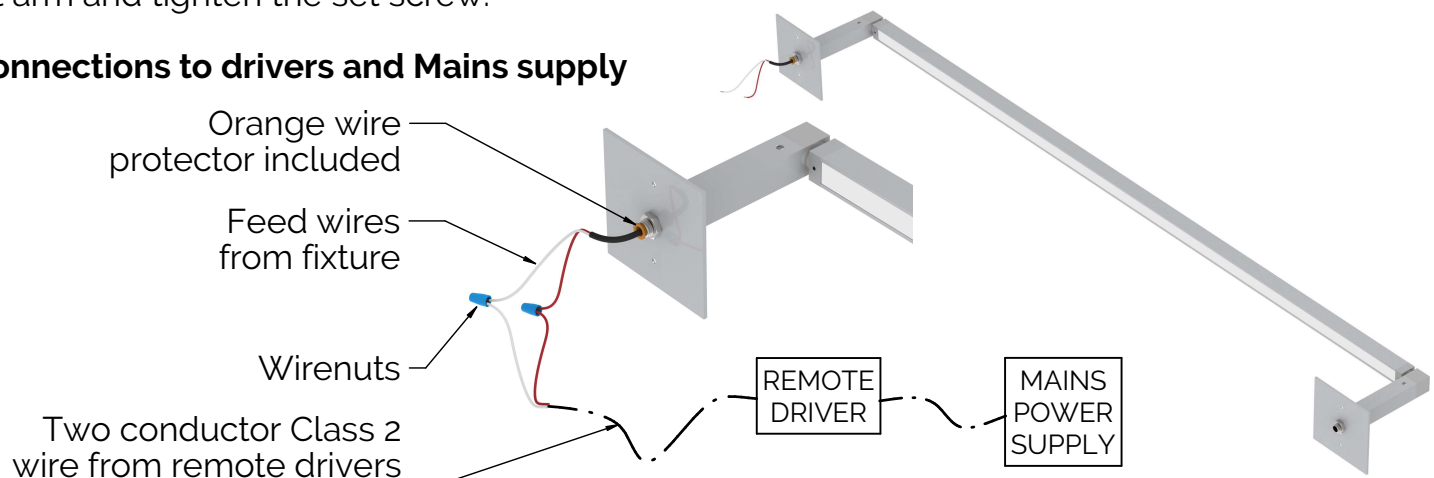
(c) Slide fixture onto rotation knuckle in a rotating back and fourth motion. Also gently pull the wire through connector leg to remove slack.

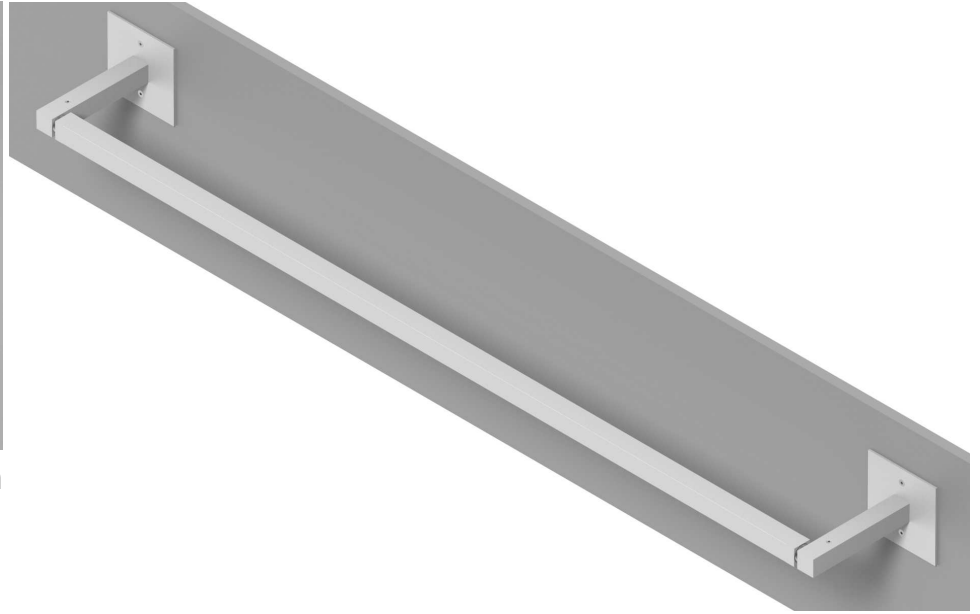
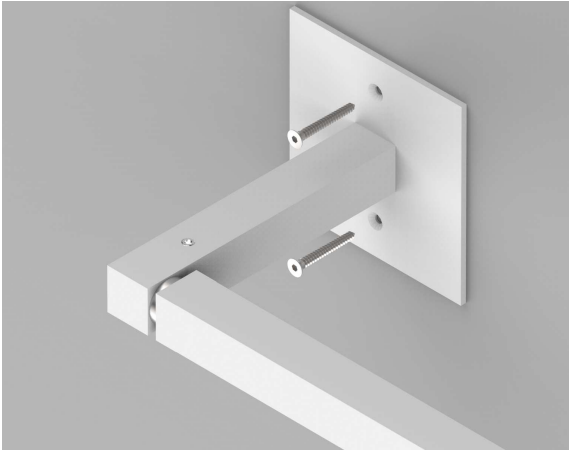
(d) Tighten set screws in endcap to hold fixture in place.

(e) Feed provided extra wire through the fixture arm from canopy end.

(f) Tape 2 or 3 wires together and pull back through canopy. Slide fixture arm over mid support pivot arm and tighten the set screw.

Feed connections to drivers and Mains supply





Securing fixture to mount location using flat head screws anchoring into blocking or j-Box

9. MAKE WIRE CONNECTION FROM LED MODULE CANOPY TO EXPOSED CLASS 2 WIRE WITH WIRE-NUTS AT J-BOX. IF NOT USING J-BOX THEN MAKE Ø1" HOLE CENTERED AT MOUNTING SURFACE AND PASS 2 CONDUCTOR CLASS 2 WIRE THRU HOLE TO MAKE WIRE CONNECTION WITH LED FIXTURE. INSERT CONNECTED WIRES BACK INTO WALL.
10. SECURE FIXTURE TO MOUNTING SURFACE USING EITHER J-BOX WITH SCREWS PROVIDED OR BLOCKING (SCREWS NOT PROVIDED). MAKE SURE SCREWS ANCHOR INTO J-BOX OR BLOCKING FROM STEP #3. MAKE SURE FIXTURE IS WELL SUPPORTED AND THAT THERE ARE NO PINCHED OR EXPOSED WIRES.
11. ROTATE LED MODULE FOR BEST ILLUMINATION AT SURFACE AND TIGHTEN ANGLE ADJUSTING DOUBLE SET SCREW. REMOVE FIRST TO GET TO SECOND TO TIGHTEN. DO NOT OVERTIGHTEN SET SCREW.
12. MAKE MAINS POWER CONNECTION TO LED DRIVER USING PROVIDED CONNECTOR INSIDE DRIVER ENCLOSURE. MAINS POWER GROUND IS SECURED TO GREEN GROUND WIRE INSIDE DRIVER ENCLOSURE. SECURE DRIVER ENCLOSURE COVER AND RESTORE MAINS POWER.

