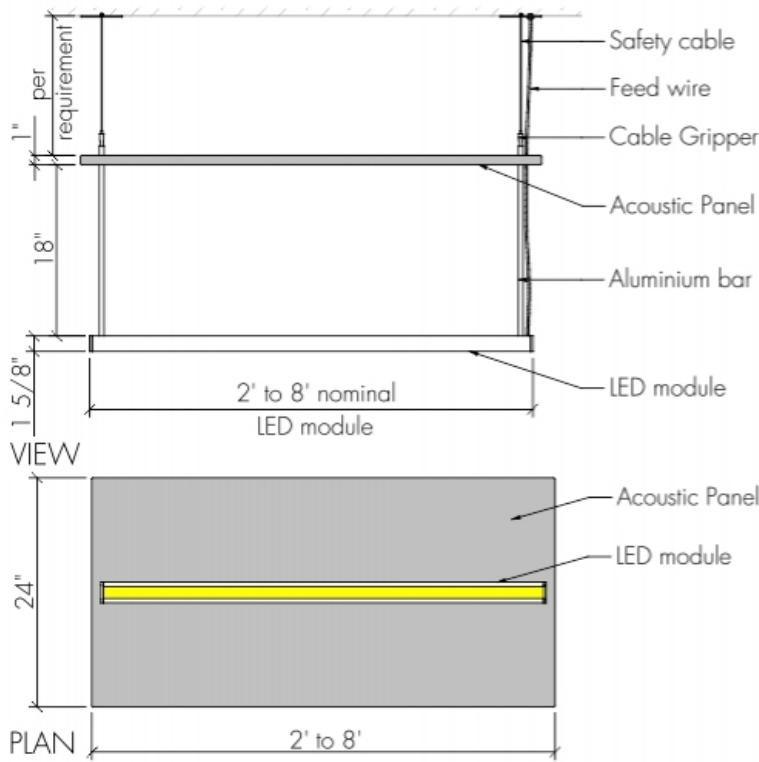
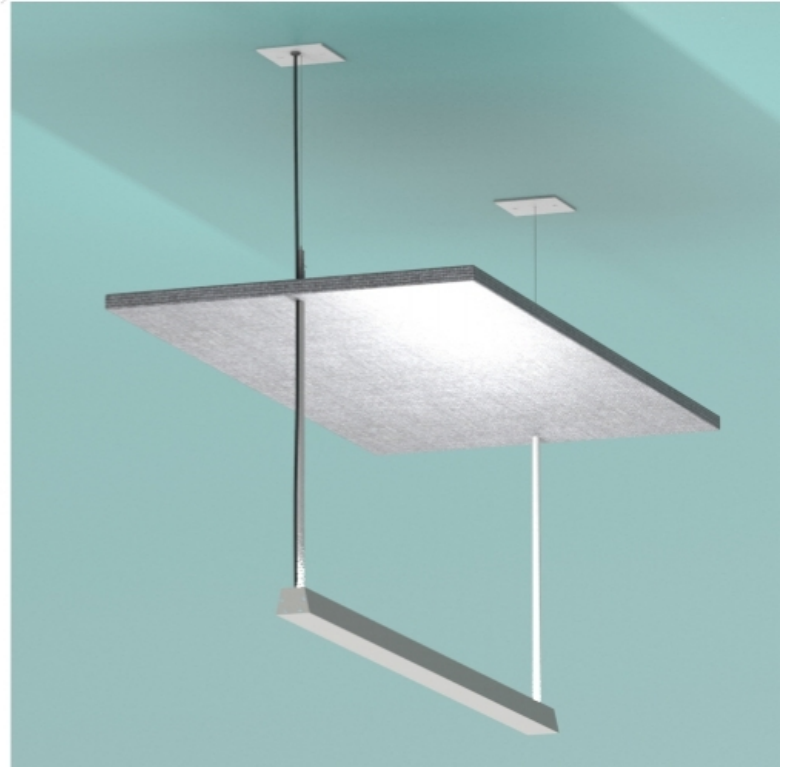


Naive Pendant Tuneful

Naive / Pendant



archlit reserves the right to make changes without prior notice. (10.18.2021)



Pendant system in aluminum extrusion and acoustic panels for acoustic treatment of spaces. Acoustic panels in 1" (NRC of 0.90) and 2" (NRC of 0.95). Different configurations upon designer needs. Upholstery in different colors. Selection of custom provided by client possible or printed on acoustic material. archlit will need to test selection to verify is workable. Programmable drivers (at factory) allow different outputs. Drivers are remote up to 80 feet. Sound are waves that require surfaces to generate proper treatment in spite of the panels composition (that are also improving the acoustics). A combination of the panel and it's material for sound absorption.

NaPeTu

Naive Pendant Tuneful

Lumen Output

- 3017 - 3000 K 1200 lumens / ft 12 w /ft
- 3014 - 3000 K 980 lumens / ft 10 w /ft
- 3011 - 3000 K 780 lumens / ft 7.5 w /ft
- 3008 - 3000 K 560 lumens / ft 5.5w /ft
- 3005 - 3000 K 350 lumens / ft 3.1 w /ft
- 3517 - 3500 K 1200 lumens / ft 12 w /ft
- 3514 - 3500 K 980 lumens / ft 10 w /ft
- 3511 - 3500 K 780 lumens / ft 7.5 w /ft
- 3508 - 3500 K 560 lumens / ft 5.5w /ft
- 3505 - 3500 K 350 lumens / ft 3.1 w /ft

WhTu - White tuning 2700K @ 1050 lumens/foot
and 6500k @1200 lumens/foot 12.5 watt/foot

All Uplight versions with light will have a transparent diffuser
Use of programmable drivers allow different outputs (lumen output
and load) to fix color temperature versions

Finish

- WH - White
- BK - Black
- Cu - Custom color
- Specify RAL color
- Metal parts, canopy, and end caps

Finish of Fabric

- Gr - Gray
- Acoustic capabilities by panels. Fabric helps to achieve performance. Finish with a thin felt fabric Std is Sleet Gray 471 from chart
- CUFa - Acoustical material
- Please select chart number Colors can have variations depending on screen settings
- Client - Custom Standard or by client Fabric
- Provided by client. archlit will need samples To study possibility of work-ability with panels.
- Custom Standard, specify color from chart at Custom finish



Panels width

P2 - 2' nominal

P3 - 3' nominal

P4 - 4' nominal

Length by run choice, all panels in the same run will share the same width

Thickness of panels

Th1 - 1" thickness NRC 0.90

Th2 - 2" thickness NRC 0.95

Acoustic Blind panels

AcBl - Acoustic Blind Panels

Dimming

○ - Non dimmable 120v

1 - Non dimmable 277v

4 - Dimmable 0-10v (4wires, 120 or 277 v)

Lighting Output Direction

dL - Direct Lighting aiming down

iL - Indirect Lighting aiming Up

iL includes clear lens for dust protection

Can mix direct and indirect lighting in Runs

Runs

B - 2' nominal 25 1/2" LED module 23 5/8"

C - 3' nominal 36" LED module 34 1/8"

D - 4' nominal 48" LED module 46 1/8"

E - 5' nominal 58 1/2" LED module 56 5/8"

F - 6' nominal 71 1/2" LED module 69 5/8"

G - 7' nominal 81" LED module 79 1/8"

H - 8' nominal 93 " LED module 91 1/8"

Total Run: (0 ft 0 in)

Canopy

RD - Round 4 1/4"

SQ - Square Plate 4 1/4" x 4 1/4"

Suspension Aircraft Cable

36 - 36" max

100 - 100" max

Emergency

00 - No Emergency

EM - Emergency

Specify qty only if Emergency

Specify quantity of 4' nominal in runs

Emergency and driver remote, up to 50"

Use BWG 18 for connections

Max 4 feet Emergency per module

Specify qty of emergency per run

Notes:

McAdam 3 step binning

More than 90 CRI

Drivers remote

Max distance to drivers 80'

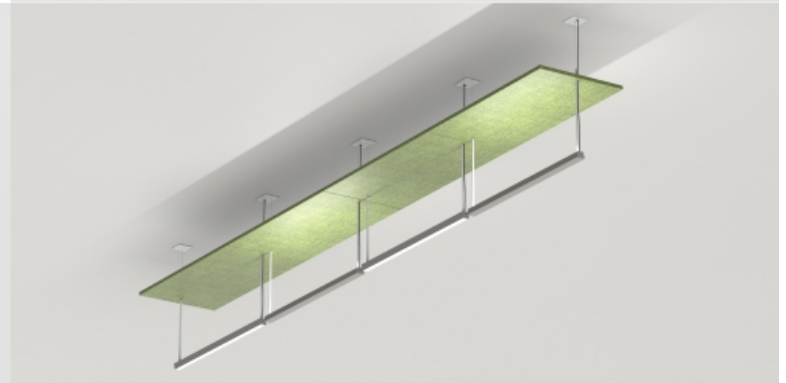
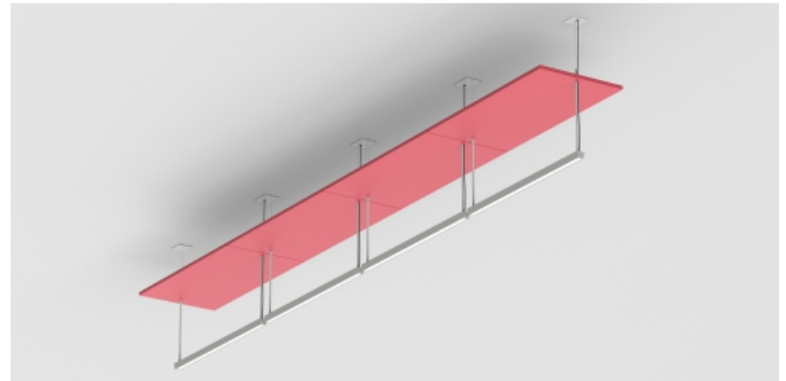
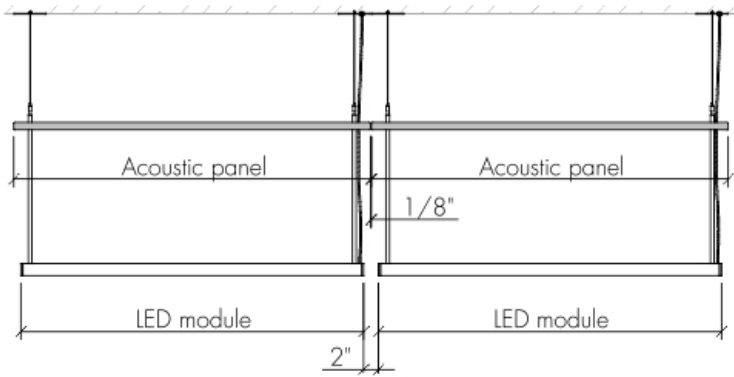
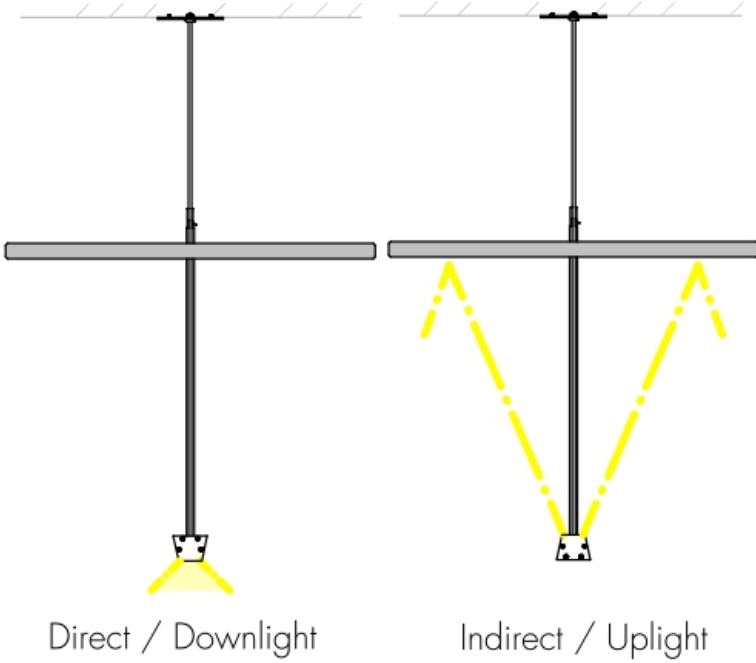
1" panels NRC 0.90

2" panels NRC 0.95



Naive Pendant Tuneful

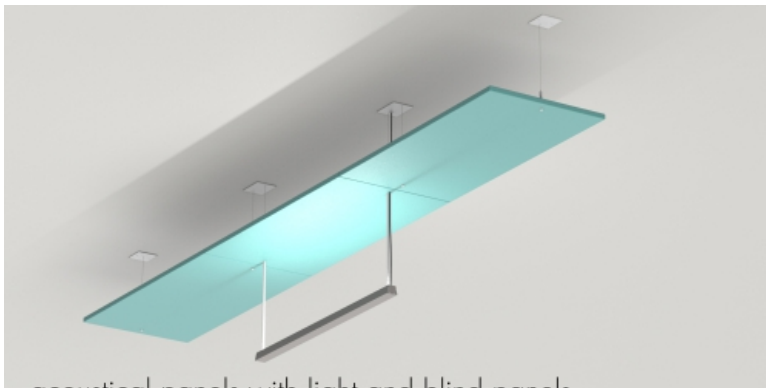
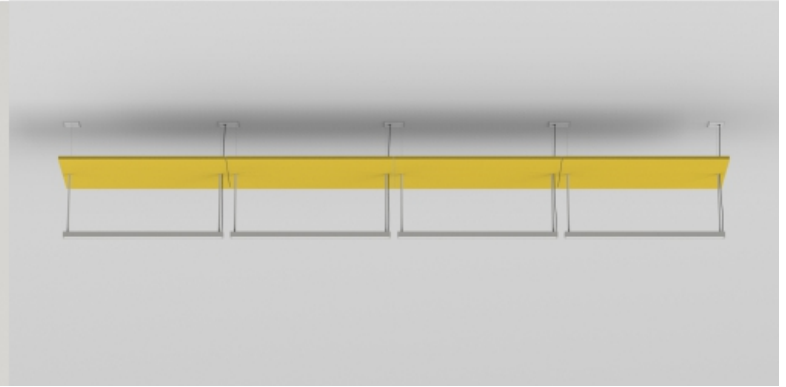
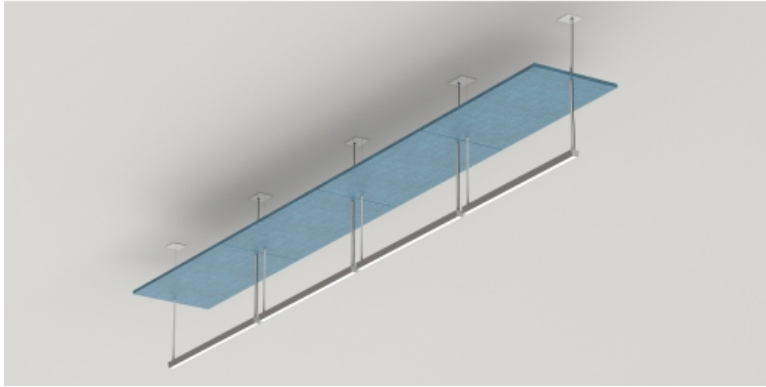
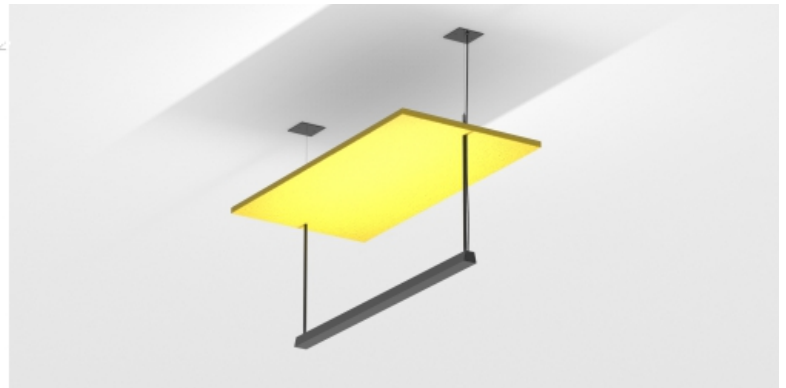
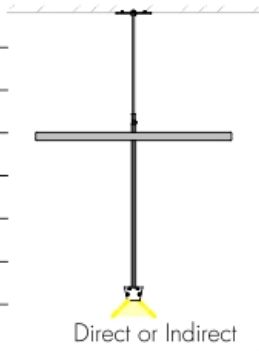
Naive / Pendant



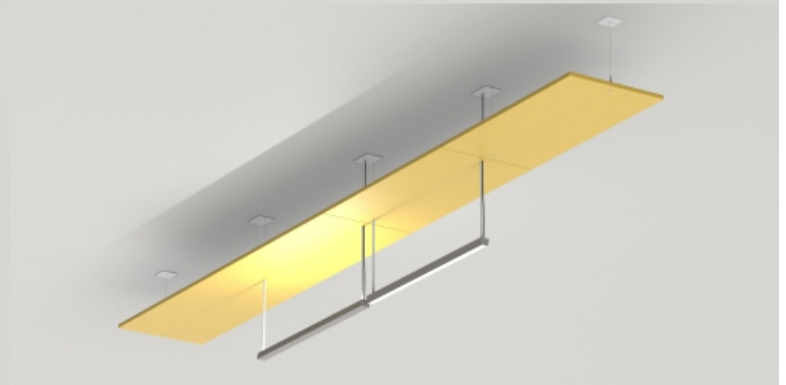
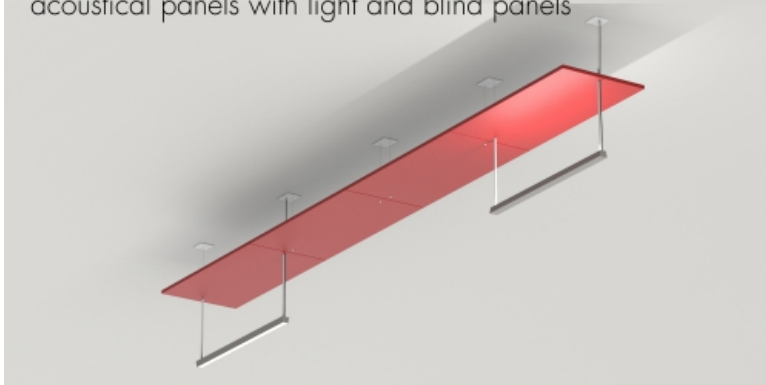
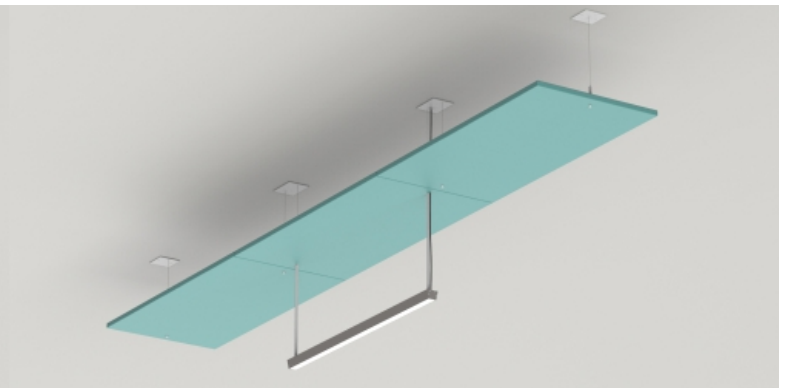
Naive Pendant Tuneful

Naive / Pendant

Nominal fixture	LED module	Panel length
2'	23-5/8"	25-1/2"
3'	34-1/8"	36"
4'	46-1/8"	48"
5'	56-5/8"	58-1/2"
6'	69-5/8"	71-1/2"
7'	79-1/8"	81"
8'	91-1/8"	93"



acoustical panels with light and blind panels



Naive Pendant Tuneful

Naive / Pendant

Standard FR701 Acoustic
fabric Options



Yellow
744



Chartreuse
734



Fir
743



Leaf
755



Dune
749



Sunshine
797



Lime
721



Teal
742



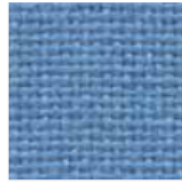
Green Neutral
402



Stream
757



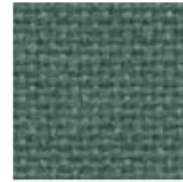
Orange
746



Sky
740



Sapphire
745



Blue Spruce
467

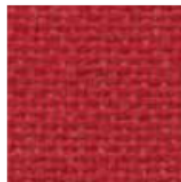


Verte Papier
561

Proudly woven in the USA

Flammability (ASTM E84)
Class I or A

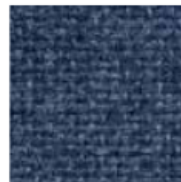
While we make every
effort to make sure the
colors you see here are
accurate, colors may vary
depending on your screen



Cardinal
738



Cobalt
420



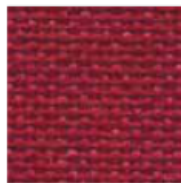
Baltic
153



Wedgewood
150



Bayberry
486



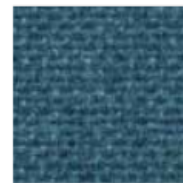
Red
799



Iris
798



Blue Plum
553



Ultramarine
470



Aquamarine
381



Claret Accent
418



Deep Burgundy
556



Black
408



Chocolate
793



Medium Grey
298

Acoustic capabilities by
panels. Fabric helps to
achieve performance.



Naive Pendant Tuneful

Naive / Pendant

Content

100% post-consumer recycled polyester



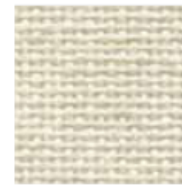
Wheat
130



Bone
748



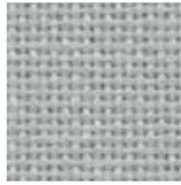
Buff
460



Eggshell
144



White
224



Eucalyptus
468



Desert Sand
758



Apricot Neutral
404



Quartz
380



Pearl
481



Blue Papier
539



Coin
794



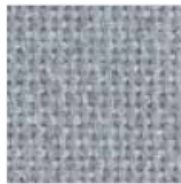
Cherry Neutral
400



Vanilla Neutral
403



Opal
394



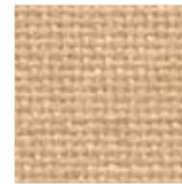
Crystal Blue
175



Blue Neutral
401



Cinnabar
422



Straw
747



Silver Papier
538



Steel Grey
471



Grey Mix
238



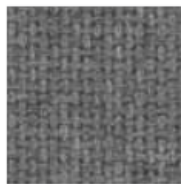
Pumice
423



Light Moss
754



Cement Mix
750



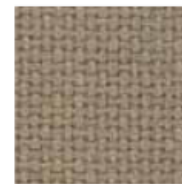
Flannel
795



Amethyst
424



Moleskin
796



Earth
792



Silver Neutral
406

Cleaning Code

Standard Care Label W-S.
Clean with water based cleaning agents, foam or pure, water free solvents. Vacuuming or light brushing is recommended to prevent dust and soil buildup.

NRC panels 1" = 0.90

NRC panels 2" = 0.95



Driver Boxes

